

# What's up at ARMS?



## Alouette River Management Society

24959 Alouette Road, Allco Park, Maple Ridge, BC

Tel: 604-467-6401 Fax: 604-467-6478

Website: [www.alouetteriver.org](http://www.alouetteriver.org) Email: [arms@alouetteriver.org](mailto:arms@alouetteriver.org)

Fall 2011

### Upcoming Events

Sunday, September 25

#### 18<sup>th</sup> Annual Allco Park Rivers Day

Allco Fish Hatchery  
24959 Alouette Road  
Maple Ridge  
11 am to 3 pm



#### Saturday, October 1 Salmon Spawner Survey Training

Maple Ridge Park  
Anyone interested in volunteering is welcome to attend.  
10 am to 12 pm

#### October - December Salmon Spawner Survey

Located in streams around Maple Ridge.  
More info on Page 3

November 13  
**Hyde Creek Salmon Festival** at Hyde Creek Recreation Centre  
Port Coquitlam  
11 am to 3 pm

## Adopt-A-Stream Near You

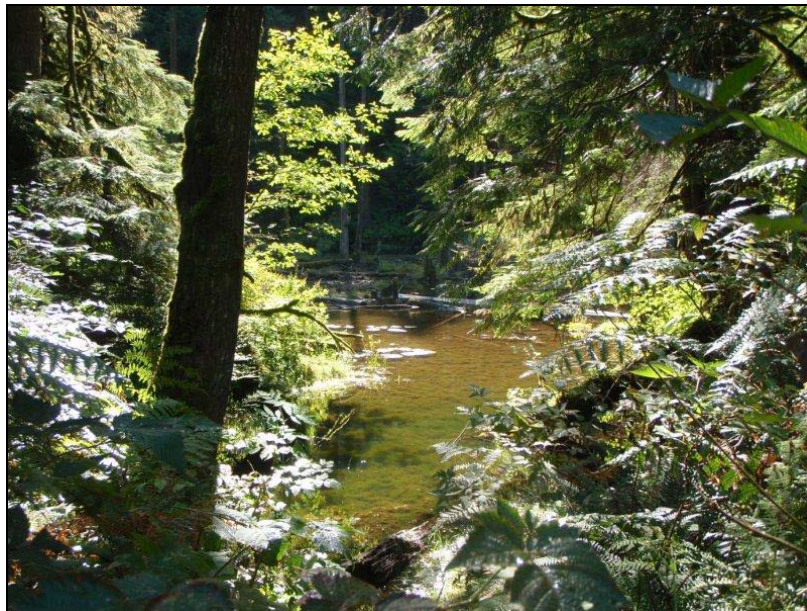
The streams in our backyards deliver water to the Alouette River and a healthy stream means a healthier river! This fall, ARMS is partnering with neighbourhoods and community groups to Adopt-A-Stream. ARMS is training individuals how to monitor the health of streams and report any problems. Groups will be picking up garbage around the stream bed, testing the water quality, removing invasive plants, planting native species, monitoring aquatic invertebrates, storm drain marking & more!

ARMS is excited to start working with the Environmental School at Golden Pond, the Connex School at Aldridge Acres Farm along the North Alouette

River, residents along T2 Creek, and we hope to soon be working with the residents along the 232 Street Channel and the Ridge Meadows Hospital along McKenney Creek.

If you have a love for your area and are concerned for your local stream health, please do not hesitate to call us to set you on your way to being a streamkeeper! ARMS sends out a huge "Thank You" to the Fraser Salmon & Watersheds Program, who have funded the Adopt-A-Stream program.

#### Fraser Salmon & Watersheds Program



Golden Pond, where the Environmental School will count fry and spawning salmon, place new duck boxes, measure turbidity, test water quality and more.

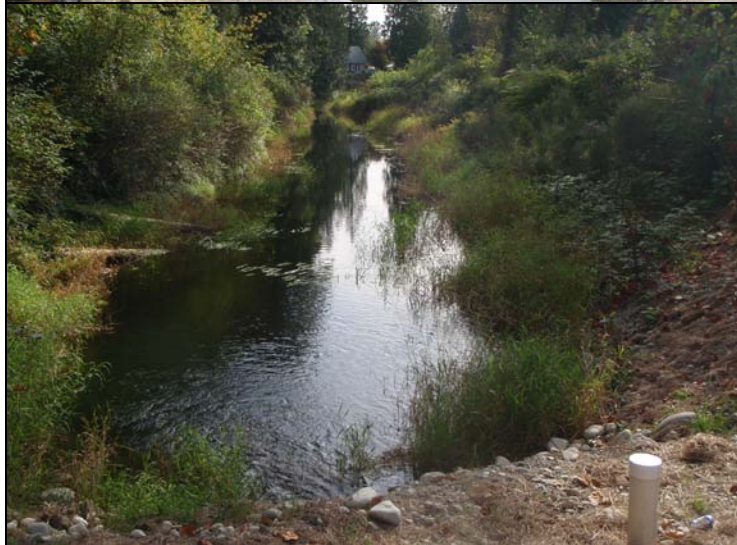
## 232 Channel Retrofit

This summer, the Department of Fisheries and Oceans retrofitted a channel that was created over 15 years ago. The 232 Street Channel was created to increase coho habitat in the Alouette Watershed, unfortunately, the water intake was continually clogging up with sediment and the water outtake had a beaver who tried many times to dam the channel.

With funding from BC Hydro's Fish & Wildlife Compensation Program (formally the Bridge Coastal Fish & Wildlife Restoration Program), the DFO installed a new intake, one that

will constantly clear all sediment and will not clog, and redesigned the outtake with more fencing to stop the beaver from blocking the flow of water and rip rap (larger rocks) over the outtake to ensure flooding will not occur.

The area around the channel also has a lot of invasive species like Japanese knotweed, blackberries, and scotch broom. The DFO cleared much of the invasive species and it is now up to the neighbourhood, with ARMS assistance, to keep the area clear and to plant native shrub species to rehabilitate the area.



**Above:** 232 Street Channel retrofitted outtake with rip rap to ensure flooding will not occur and fencing to keep the beaver at bay.

**Left:** 232 Street Channel with improved water flow at the intake.

### Education & Community Outreach

A Huge Thank you to TD Friends of the Environment for donating \$2000 to our Education & Community Outreach Project! Through this donation we will be able to create new display material for special events and update our education materials.



### Duck Race Boosts Kid's Programs at ARMS

This year was the first Duck Race on the Alouette River. A great job was done by the Meadow Ridge Rotary and volunteers to put on a fine race. ARMS was fortunate to receive \$1000 from the Duck Race and we want to thank the Meadow Ridge Rotary for helping ARMS support outdoor environmental activities for children.



**ARMS Website Updates More Often!**

The ARMS website, [www.alouetteriver.org](http://www.alouetteriver.org), was overhauled in 2007, but unfortunately, has not been kept as current as we wanted it to be. That is now changing. ARMS staff are now trained to update the website ourselves (much easier than expected!) and now you can look us up more often to see *What's Up At ARMS!?!*



Dissecting a chum on Latimer Channel

## ARMS, the Hatchery & PSF

The Pacific Salmon Foundation (PSF) has been a long time supporter and funder of ARMS and the Allco Fish Hatchery. Over the past year, PSF has contributed over \$35,000 for the upgrade of the Allco Fish Hatchery, including a new roof for the incubation room, green features for

the new workshop building and installation for a new generator, which will be running by the spring of 2012. ARMS and the Allco Fish Hatchery would not be able to run our programs to the same capacity without the support of PSF.



The Allco Fish Hatchery Incubation Room with a new roof. The old roof was leaking and in need of great repair to ensure damage was not done to the building interior.

## Funding from Gaming in Question

This year is the second year funding through the Environmental stream of BC Direct Access Gaming is not open for environmental groups. Last year ARMS was not affected by this decision because ARMS was on the third year of a three year grant. However, ARMS gaming funding is currently in question. ARMS is a community-focused group with great education and community programs and ARMS has been able to apply for a gaming grant through the Human and Social Services stream. There have been other environmental groups who have been successful by going about their gaming applications this way.

but we will not know if it was successful until December. Gaming grants supply the single largest core funding ARMS receives. It pays for wages, phone and internet, and other overhead costs, most of which are not covered by regular project funding.

At the beginning of September, ARMS applied for a gaming grant,

Gaming grants are important to community groups like ARMS. Geoff Clayton and Amanda Crowston spoke at one of the community gaming grant review sessions in Abbotsford last month to make sure ARMS' voice was heard. The review of the gaming grants has almost been completed and will be submitted to the provincial government on October 31, 2011.

## 5 Years of Counting Salmon

Going into our fifth year, ARMS salmon spawner surveys are looking strong. Each year, volunteers spend 2 hours a week from October to December counting live salmon and dissecting dead salmon to gather information on four streams: Coho Creek, Latimer Channel, Millionaire

Creek, and the North Alouette River. If you are interested in volunteering to count salmon, phone us at 604-467-6401 or come to our volunteer training day at Maple Ridge Park on Saturday, October 1<sup>st</sup> at 10:00 am.

## Summer Camp Success!

In July, ARMS held Wacky Wildlife, a week-long day camp with many fun crafts, games and learning about our local wildlife. We studied live frogs at different stages of development. On Bear and Cougar day, the children learned all about bear safety from a professor at the University of the Fraser Valley. The kids listened intently as he taught what to do if a bear approaches. They learned all about black bears, grizzly bear safety and practiced what they were taught during playtime.



The next day, the kids learned why wild animals like squirrels, racoons, skunks, deer and chipmunks do not make good pets and why it is important to keep wild things wild. Campers also released salmon fry to the river and learned the salmon will return to the Alouette River in a few years. We talked about how important it is that salmon travel such a great distance to the ocean to eat the krill and bring back marine nutrients to our forests. Salmon are important creatures! All these creatures are important to our trees in the forest and they make difference to the natural environment and people of our community. By the end of the week the children were able to identify most of the trees themselves!

Our annual Bugs and Slugs camp was held in August. We talked about different types of bees and the importance of their role in pollination. We busied ourselves making traps like spiders and searched for allusive snails. We could not find snails, but we did find so many slugs which we raced later. The children explored the similarities and differences between dragonflies and ladybugs and we had a speaker come show the kids the wonderful world of composting. The kids explored the aquatic bugs with magnifiers and microscopes and they became real little scientists! The world of bugs is so much fun!

## Introducing: School Ecology Tours

Thanks to RBC's Blue Water Project we have received a grant of \$5000 to get an incredible new program underway. Our on-site "School Ecology Tour" is designed to bring a full day field trip right to the school. Teachers are encouraged to bring education outdoors with this innovative program. Students will have a field trip right in their own playground and surrounding park areas.

The presentation includes watershed education, storm drain marking, plant and local wildlife studies, brainstorming about how we can influence our environment in a positive way and more. Each School Ecology Tour is uniquely designed for each elementary school in our area to make it most applicable for the student.



Thanks RBC!



**2011-2012  
Board of Directors**

Geoff Clayton  
Co-Chair

Gerry Miller  
Co-Chair

Doug Stanger  
Treasurer

Zale Hammren  
Director

Liz Hancock  
Director

Mike Ilaender  
Director

Ron MacLean  
Director

Keith Maguire  
Director

Deborah Paddon  
Director

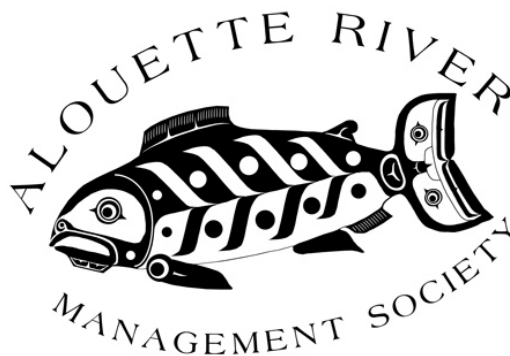
Bing Pare  
Director

Cheryl Power  
Director

**Staff**

Amanda Crowston  
Executive Director

Nicole Driedger  
Education Coordinator



*"Through partnerships and education,  
empower the community to take ownership and  
responsibility of the natural environment"*

Join the  
**Alouette River Management Society**

If you would like to become a member of ARMS, please complete the following registration and return it by mail or drop it off at 24595 Alouette Road, Allco Park, Maple Ridge.

Name: \_\_\_\_\_

Address: \_\_\_\_\_

Phone: \_\_\_\_\_

Email: \_\_\_\_\_

Annual Membership Type:

Individual - \$10

Corporate - \$100

Yes, I would like a charitable receipt

Area of Interest:

Rivers Heritage Centre

Environmental Education

Watershed Projects

Native Plant Nursery

Stewardship Issues

Habitat Protection

Nature and Wildlife

Fish and Hatchery Projects

Urbanization Issues

Other: \_\_\_\_\_

Signature: \_\_\_\_\_

Date: \_\_\_\_\_